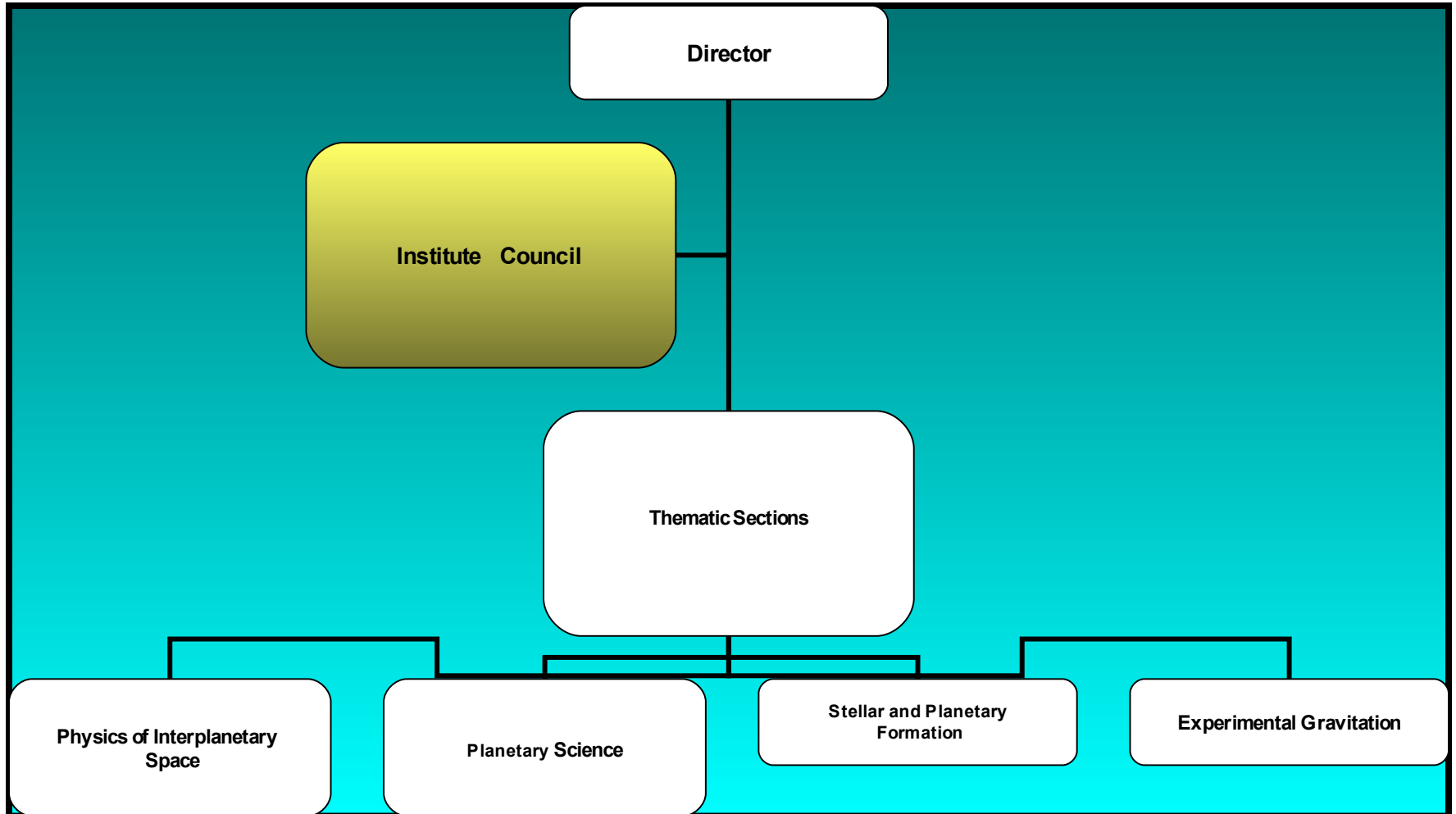

IFSI: AN INTRODUCTION

A. Coradini

IFSI Structure



Post operation

- **Giotto** Encounters with comets Halley
 - **IFSI (YPA)**
- **ISO** Probing the cool and Hidden Universe
 - **IFSI (DPU, SW development Coordinator for LWS)**

In operation

- **Ulysses** Charting the poles of the Sun
 - **IFSI (Solar Wind Analyser)**
- **SOHO** Staring at the Sun
 - **IFSI (MDI data analysis In conjunction with Themis data)**
- **Cassini Huygens** Heading for Saturn and Titan, Saturn's mysterious moon)
 - **IFSI (VIMS-V)**
- **Cluster** Studying how the solar wind affects the Earth
 - **IFSI (CIS)**

In operation (Cont'ed)

Rosetta

- Searching for the pristine matter in the Solar System
 - A rendezvous with Comet Churiomov/Gerasimenko
 - IFSI (VIRTIS)

Mars Express

- Mapping Mars and searching for water
 - IFSI (PFS and Ω VNIR)

Venus Express

- Study of Venus atmosphere
 - IFSI(VIRTIS spectrometer)

Dawn

- Study of Solar System Primordial bodies
 - IFSI(VIR spectrometer)

Future missions

Solar Orbiter

- Close-up high-resolution studies of our Sun and inner heliosphere
 - I 瞻 **SI** (Solar Wind Analyser)

Bepi-Colombo

- ESA's cornerstone mission to Mercury
 - **IFSI (ENA and Spectrometer)**

Herschel

- Exploring Formation of stars and Galaxies
 - **IFSI DPU**s

JUNO

- Study of Jupiter Interior
 - **IFSI JIRAM Spectrometer**

Exomars

- In situ Study of Martian Characteristics → search for life
 - **IFSI Ma-Miss and Mima**

Criteria used in FP6 for proposal selection

- High Scientific value → show the importance of modeling and R&D in support of Space Missions
- Show that the coordinated activity has an added value in respect to the “ independent “ local” approach
- Management → Clear and well defined distribution of roles and responsibilities between central Management and distributed participants.
- Involvement of maximum number of European countries with special attention emergent countries (previous Eastern Europe, Greece..)
- Clear identification of advantages in creating Labs Networks, indicating possible coordinated use of local “ Specific Facilities” and evaluation of the potential cost (seen as a ”saving”)
- Accessibility of the different laboratories (evaluation of the number of persons that are needed to guarantee accessibility)
- Training of young researchers in specific activities and Exchange of people and activities
- Impact of the overall activity on the Social European life and Integration of Europe